



555 East Loockerman St.
Dover, Delaware 19901

McGinnis Commercial Real Estate

Phone: 302.736.2710 Fax: 302.736.2715

www.mcginnisrealty.com

MILFORD MEDICAL PROPERTY
611 NORTH DUPONT HWY, MILFORD, SUSSEX COUNTY, DELAWARE 19963

OFFICE FILE# 201130 * MLS# 5924484

FOR SALE

MEDICAL, RETAIL OR PROFESSIONAL OFFICE BUILDING



SALE PRICE \$ 429,000 * \$ 123.00 +/- PER SQUARE FOOT

MULTI USE MEDICAL/RETAIL/PROFESSIONAL OFFICE BUILDING

STAND ALONE BRICK BUILDING WITH ON SITE PARKING

HIGH VISIBILITY LOCATION AND ENTRANCE ON DUPONT HIGHWAY

ZONED HIGHWAY COMMERCIAL IN THE TOWN OF MILFORD

LEASE OPTIONS ARE AVAILABLE

ALL INFORMATION SUBMITTED SUBJECT TO ERRORS AND MODIFICATIONS. ALL INFORMATION CONTAINED HEREIN OBTAINED FROM RELIABLE SOURCES BUT NOT GUARANTEED. PROSPECTIVE PURCHASERS SHOULD VERIFY ALL INFORMATION SUBMITTED. LISTING BROKERAGE REPRESENTS SELLER.

PAGE 1 OF 4 PAGES

MILFORD MEDICAL PROPERTY
611 NORTH DUPONT HIGHWAY
MILFORD, SUSSEX COUNTY, DE 19963
July 21, 2011

Tax Map Identification 1-30 3.11 54.00

Deed Reference 3871 218

Zoning C-3 Highway Commercial
 Town of Milford

Land Area 32,390 square feet

Frontage 205.00 ft +/-

Depth 158.00 ft +/-

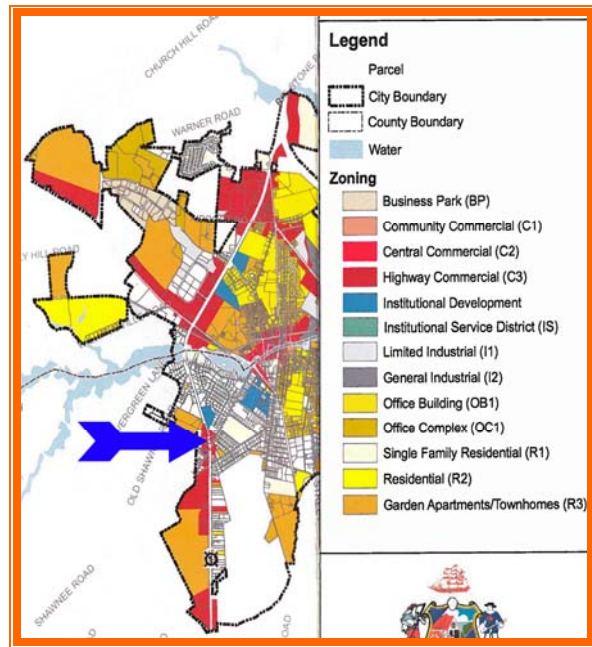
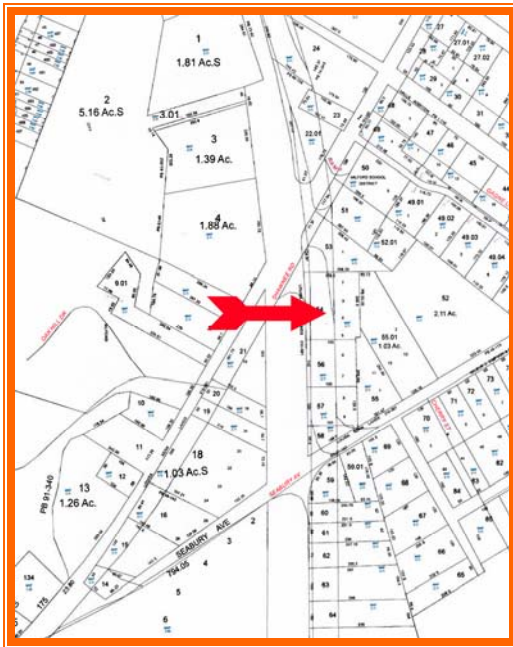
Bldg Area (sq ft) 3,500 +/-

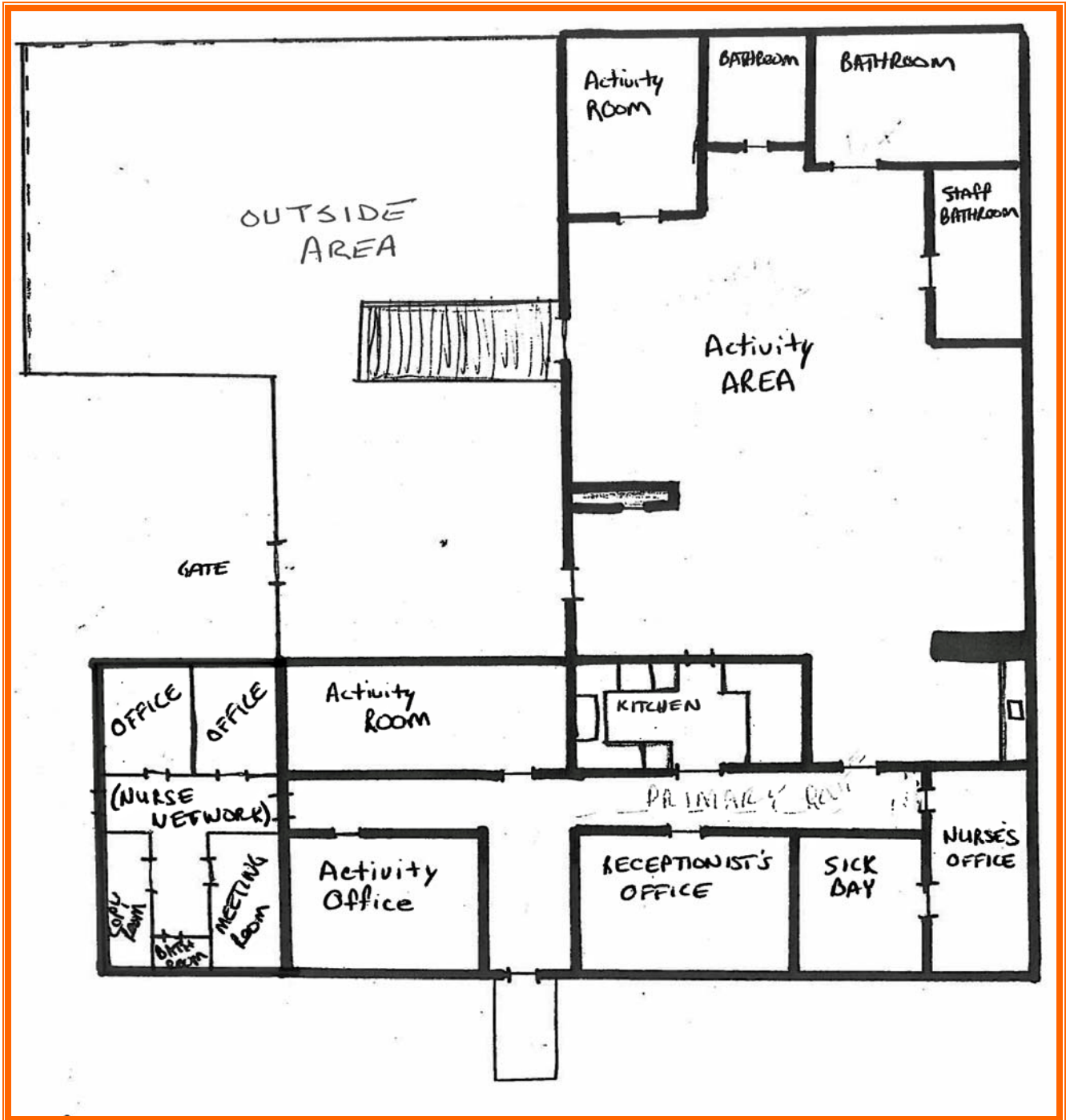
Parking Spaces 19

City Tax 2010 \$437

County Tax 2010 \$2,097.00

TOTAL PROPERTY TAX 2010 \$2,534.00







FOR ADDITIONAL INFORMATION CONTACT:

CHUCK SPIEGELMAN
MCGINNIS COMMERCIAL REAL ESTATE

OFFICE: 302-736-2710

FAX: 302-736-2715

MOBILE: 302-632-0859

EMAIL: cs@mcginnisrealty.com

ALL INFORMATION SUBMITTED SUBJECT TO ERRORS AND MODIFICATIONS. ALL INFORMATION CONTAINED HEREIN OBTAINED FROM RELIABLE SOURCES BUT NOT GUARANTEED. PROSPECTIVE PURCHASERS SHOULD VERIFY ALL INFORMATION SUBMITTED. LISTING BROKERAGE REPRESENTS SELLER.
PAGE 4 OF 4 PAGES